

R-F-M

THE MIDLANDS MART

— RUGBYFARMERSMART.COM —



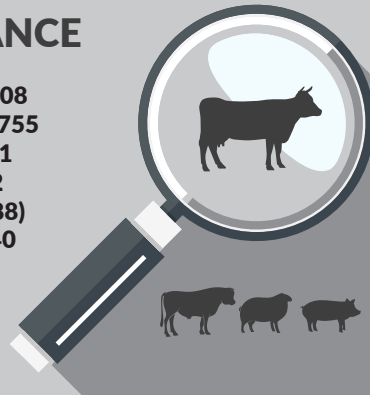
The Charolais Pavilion, Avenue M, Stoneleigh Park,
Kenilworth, Warwickshire CV8 2RG
02476 697731 | www.rugbyfarmersmart.com | 43/139/8013
Office hours: Monday to Friday - 9.00am - 5.00pm
Opening Time: Gates open at 5.30am until further notice



MARKET REPORTS FOR MONDAY 7TH DECEMBER 2020

MARKET AT A GLANCE

Prime Steers to 264p/kg & £1708
Prime Heifers to 500p/kg & £2755
Prime Bulls to 134p/kg & £1441
Cast Cows to 174p/kg & £1422
Prime Lamb SQQ 236p/kg (1888)
Prime Lambs to 488p/kg & £240
Ewes to £212 (779 Avg £86)
Store Lambs to £93



MONDAY 14TH DECEMBER Sale of Store Cattle

Catalogues & Entry Forms available by post, email or on the website
www.rugbyfarmersmart.com | admin@rugbyfarmersmart.com

CATTLE: 74 FORWARD



A fantastic turn out in both the show and commercial sections with several runs of good, fed cows to boot.

The Show cattle sold first today with a ringside of Butchers and Wholesalers all keen to support their local farmers and all of whom competed fiercely for the strong show on offer.

The Supreme Champion Beast, first into the ring, being a superb Limousin Heifer from Richard and Judy Fountaine, weighed 551KG and soared to an eye watering 500PPK, selling to Mr Brian Wilson, on behalf of the Bell Hotel, Winslow. This will be used in their famous beef nights, which I'm sure you will all support!

Reserve Champion today from Frank Page, a sweet Limousin Heifer weighing 556KG and selling to 480PPK to Mr Richard Morris, on behalf of Joseph Morris Butchers LTD, South Kilworth.

Young Farmers Champion today from Josh Geary, with a Limousin x Heifer weighing 568KG selling to 360PPK to the Judge, Mr P Humphries, on behalf of CH Humphries, Essex.

The remainder of the show cattle passed through in lot order and sold to a strong trade, with plenty of bidding at ringside from several fresh and returning faces! Highlights saw the Heifers to 298PPK for a 588KG Limousin from the Fountaines, with the top Steer from PM Jarrom selling to 264PPK for a 622KG Limousin.

The Champion Cow, a well fleshed Limousin sold to 174PPK from PM Jarrom to Mr Jack Gilder, on behalf of Mutchmeats LTD, Witney.

Into the commercials which saw a swift trade throughout. Top Steers saw handy Limousin Bullocks from F&J Clarke selling to 220PPK, with well fed Angus from Jane Gilbert selling to 219PPK and topping the gross in the commercial section at £1339.

Topping the commercial Heifers saw Martin Emery selling Limousin x to 226PPK and topping the Heifers at £1263. Plenty of "O" grade types forward today and these trading between 185 & 195PPK.

Cows-

A bumper entry of Cows today with two fresh faces at ringside all helping to push trade forward. Top PPK from Hillside Farm selling Angus cows to 152PPK, grossing £1422. Lots of cows forward today Non-FABBL but this making very little difference with the majority of these native bred cows 120-125PPK shipped up from Essex.

Auctioneer: Martin Lloyd

**NEXT CALF SALE
MONDAY 14TH DECEMBER 11AM**

STEERS & BULLS

Top prices per Head				FA
Charolais x	700kg	£1708	DA Davies	Y
Limousin x	662kg	£1688	W Ketley	Y
British Blue	640kg	£1677	Page Bros	Y
Limousin	622kg	£1642	P M Jarrom	Y
Limousin x	634kg	£1610	DA Davies	Y

Top prices per Kilo				
Limousin	622kg	264ppk	P M Jarrom	Y
British Blue	640kg	262ppk	Page Bros	Y
Limousin x	662kg	255ppk	W Ketley	Y
Limousin x	634kg	254ppk	DA Davies	Y
British Blue	643kg	249ppk	P M Jarrom	Y

HEIFERS

Top prices per head				FA
Limousin	551kg	£2755	GR Fontaine & Son	Y
Limousin x	556kg	£2669	Page Bros	Y
Limousin x	568kg	£2045	A J Geary	Y
Limousin x	672kg	£1821	W Ketley	Y
Limousin x	677kg	£1778	GR Fontaine & Son	Y
Top prices per kilo				
Limousin	551kg	500ppk	GR Fontaine & Son	Y
Limousin x	556kg	480ppk	Page Bros	Y
Limousin x	568kg	360ppk	A J Geary	Y
Limousin	588kg	298ppk	GR Fontaine & Son	Y
Limousin x	613kg	290ppk	GR Fontaine & Son	Y

SHEEP: 2852 FORWARD

SPRING LAMBS: 1888

FORWARD SQQ 236 P/KG



Lambs – Every lamb in the Market returns an average of £100!!!!

Show day today and as a result a few less on display but still a yarding of 1900 in any case. Trade start to finish off the clock producing an SQQ of 236p/kg all in and the commercial lambs running at 228p/kg prior to the inclusion of the Show. Simply put, today Export lambs on fire and meat rewarded throughout, as are the lightweight home trade lambs. Signs of a small movement in the heavies but returns continuing to be comparably difficult in comparison to the glorious Export trade which for the commercials shows a deadweight equivalent of 4.85p/kg deadweight.

Today's Show owes a lot to the Committee whom managed to put on a show despite Covid. Our Thanks to them and all who helped. A special Thanks to our last minute stand in Judge D Gardiner, Suffolk whom did a marvellous job when called upon when Robert Leach had to withdraw through illness. We hope Robert recovers quickly!

Darren performed his duty excellently inspecting a yarding of Show lambs to compete with any. The final Summary for the day being that Pete Batchelor reigned Supreme taking Champions and Reserve Champions. Pete's 53kg Beltex from the Heavy Continental Class showed finish superb jiggitt and width with the Judge commenting the lambs seemingly possessed length not usually seen in the Breed. The Reserves saw 41kg light weight lambs from Pete that had finish for days!! The Champions raised a wonderful £240 at 53kg when fiercely competed for by Local farm shops and latterly the bidding war competed between the Judge for a Belgique Customer and the eventual purchaser Mr Akram, Pak Mecca meats Ltd realising 453p/kg. Handy weights, as was the theme of the day the commodity of choice, saw the Champions PPK beaten when the Reserves took 488p/kg at 41kg again selling to Mr Akram. Perhaps the most important class is of course the YFC Class, this year won by Josh Geary of Milton Keynes showing properly finished and presented 41kg to 476p/kg again selling to Mr Akram whom intends to fly all three trios on Thursday to a Member of a Far Eastern Royal Family!! Wonderful to see that consumers thousands of miles away will witness the quality produced by local farmers!! (Brexit negotiators please take note!)

Trade within the show Classes a continuation of the fast Commercial trade. Save as for the aforementioned a top p/kg of Export weights saw D W Gurney & Son sell 43kg at 330p/kg with M & C Morris 41kg 329p/kg and 45kg to 324p/kg. In the Heavies a top after the Champions of 298p/kg for 46kg from D W Gurney & Son with AEJ & FJ Claridge 47.5kg at 297p/kg. Messrs Gurney also taking 294p/kg for 47kg. A List of Show results are printed separately within this report.

Commercial Lambs

As mentioned above a real trade throughout with an Sqq of 228p/kg. Export weighted lambs under 43kg the real order of the day but that said mid-weights also £3 up on the week. Heavies still having a limited market place but Restaurants hopefully will put pay to this. Top today saw N Wallingtons bricks of lambs see 39kg at 274p/kg ahead of AA Fyfe & Sons 36.5kg to 268p/kg and Beltex from M J Woodward 32kg to 263p/kg. Charollais from R S Mounsey saw 39kg to 263p/kg and overnight lambs from Phil Darby saw 42.5kg to 259p/kg. Jean Herod sold meat shape and weight with 45kg to 256p/kg. Heavies in the Commercials topped at 232p/kg at 46.5kg for R C Hawes, Mixbury and 226p/kg at 46kg for David Amor.

Thanks to all on the day and as ever for the returns provided by the Buyers to match any in the Country.

Auctioneer: Tom Wrench

SPRING LAMBS : UNDER 45.5kg SQQ 236p/kg

Per Kilo			
Charollais x	41.00kg	488ppk	P Batchelor
Texel x	41.00kg	476ppk	A J Geary
Texel x	43.00kg	330ppk	D W Gurney & Son
Texel x	41.00kg	329ppk	M & C Morris
Texel x	45.00kg	324ppk	M & C Morris

Per HEAD			
Beltex	41.00kg	£200.00	P Batchelor
Texel	41.00kg	£195.00	AJ Geary
Beltex	45.00kg	£146.00	M & C Morris
Beltex	43.00kg	£142.00	D W Gurney & Son
Beltex	41.00kg	£135.00	M & C Morris

SPRING LAMBS : OVER 45.5kg

Per Kilo			
Beltex	53.00kg	453ppk	P Batchelor
Beltex	46.00kg	298ppk	D W Gurney & Son
Texel	47.50kg	297ppk	AEJ & FJ Claridge
Beltex	47.00kg	294ppk	D W Gurney & Son
Beltex	48.50kg	289ppk	GA Morris

Per HEAD			
Beltex	53.00kg	£240.00	P Batchelor
Beltex	64.00kg	£147.00	P Batchelor
Texel	47.50kg	£141.00	AEJ & FJ Claridge
Beltex	50.50kg	£141.00	M & C Morris
Beltex	54.00kg	£141.00	D W Gurney & Son

COVID 19

DROP AND GO POLICY IS BACK IN PLACE FOR VENDORS

**IF BUYING PLEASE REGISTER YOUR ATTENDANCE AT THE MARKET OFFICE,
WEAR A FACE COVERING AND SOCIAL DISTANCE AT ALL TIMES**

THANK YOU

CULL EWES: 779 FORWARD



A nice Show of Ewes Judged by W Patterson, Stoke on Trent whom placed his Champion Continentals with D Leadbeater for Texels and Champion Continentals with Welsh Mules from Charlie Jarrom. Thank you Billy!!

Trade from start to finish ferocious and all 11 buyers at ringside keen for Ewes today with only the Fat Ewes a harder sell. Top today the Champion Texel Trio from Messrs Leadbeater selling to £212 whom later sold Commercial trios to £163 and £151. Rams well chased today and topped at £137 for a Horse of a Zwartble from L M Meakin. Charolais Ewes from Rocky Poulson saw £120 whilst equal breed Rams from M J Harris Farming saw a pair to £120. H McCurdie sold Texels to £118 and BP Farms to £113.50, with Margret Morris up from Padbury to £112. Suffolks today to £109.50 from Fl & EJ Barnes with others £109 from Messrs Harris Farming Suffolks today generally trading around the £100 mark. Mules today to £108 for the Champions from C Jarrom with others £90 from BP Farms and £89 from Stan the Man Collinswood. Mules Generally either side of £80. Light Ewes trading throughout £50 plus.

Auctioneer: Tom Wrench

EWES

Texel x	£212	DJ & BJ Leadbeater	Charollais x	£120	M J Harris Farming
Beltex x	£163	DJ & BJ Leadbeater	Charollais x	£119	Poulson & Co
Texel x	£151	DJ & BJ Leadbeater	Texel x	£118	H Mccurdie
Zwartbles	£137	L M Meakin	X Bred	£113.50	BP Farms
Charollais x	£120	Poulson & Co	X Bred	£112	M Morris

STORE LAMBS: 185 FORWARD



Simply blistering. Faces all round the ring and all pushing hard to buy sheep. Top today from Leam Farm selling Charollais x to £93 equal with MJ Harris Farming. JP Willison sold Suffolk x to £93. Plenty of lambs over £80 today with strength over £85. Best of the mediums £75-£78 with harder sorts around the £70. Very little trading under £65 today.

Auctioneer: Martin Lloyd

**PLEASE COULD ALL VENDORS BOOK IN STOCK,
EITHER BY A QUICK CALL, TEXT OR EMAIL THANK YOU!**

Office: 02476697731 | Email: admin@rugbyfarmersmart.com | Tom: 07774723758

Christmas Primestock Report

With 30 Cattle and 63 Sheep entries for the 47th Rugby Primestock Show, the pandemic certainly didn't dampen our spirits with yet again a wonderful display showcasing the best of British Livestock.

In the Cattle section, strong entries in both Steer and Heifer classes unfortunately due to Covid restrictions, had to be shown tied rather than led. This tricky task fell onto the very capable shoulders of Mr Phillip Humphries, of CH Humphries & Son and Mr Brian Wilson Essex, who took to the challenge with gusto and suitably chose a fantastic Limousin Heifer from Richard and Judy Fountaine as his Supreme Champion, with his Reserve Champion coming in the form of Frank Pages stylish Black Limousin x Heifer.

So good to see plenty of entries in our Young Farmers sections this year, with our future generations turning out top quality stock at an early age. From a strong Young Farmers Cattle class our judge finally picked Josh Geary as his winner with a Limousin x Heifer. The Sheep section also found plenty of support this year, and last minute super substitute Judge Mr Darren Gardiner, Norfolk, took to the task with relish. He found his Champion and Reserve Champion from regular star of the show Pete Batchelor, with his Champions from class 15 And Reserve from 17. The Young Farmers class was again well supported with the Judge having plenty of choice before picking his winner in Josh Geary, doing the double this year with some super Beltex x Lambs.

The Ewe Section was kindly judge by Mr Billy Patterson, of W & A Livestock, Stoke on Trent who selected his Continental Champions from a strong run from DJ & BJ Leadbeater, with his Native Champions from Martin Woodward.

Before the Sale of Show Cattle, Cindy Simpson from the Market Cafe had very kindly baked and decorated a Christmas Cake, which was auctioned on behalf of the Chairman's Chosen Charity, and sold to £360 to the ever generous Martin Woodward.

Our thanks goes to our four Judges, Mr Phillip Humphries, Mr Brian Wilson, Mr Darren Gardiner and Mr Billy Patterson for their time and expertise, it is greatly appreciated.

Our thanks also goes to the staff at RFM who support us every year and make this whole show possible and David Simpson for photographing the day.

We thank all of the buyers, who support us in our sale and many of whom will be showing the fantastic stock purchased in butchers counters soon, giving us a chance to support them in return.

And finally we thank you, the vendors, for supporting our show this year in very difficult circumstances.

A full table of results are on the next page

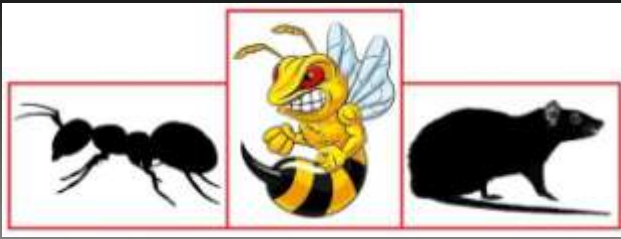
Martin Lloyd
Primestock Chairman

Prize Winners - Sheep

Class	Exhibitor & PEN
Champion Euro Sired Lambs (Classes 14, 15 & 16 also 17 & 18 were applicable)	P Batchelor 1st Class 15 Bel/Texel Sire Heavyweight Pen 45 - 53kg £240 PAK MECCA
Champion Native Sired Lambs (classes 19 & 20 also 17 & 18 if applicable)	T C Williams & Sons 1st Class 19 Native Sire Lightweight Pen 61 - 40.5kg £130 The Lost Farm
Champion Cull Ewe (classes 24 & 25)	DJ & BJ Leadbeater 1st Class 24 Continental Cull Ewes Pen 83 - £212 PAK MECCA
Champion Suffolk Sired Pen of Lambs (All Classes)	A J Geary 4th Class 20 Native Sire Heavyweight Pen 63 - 53kg £120 BW WILSON
YFC Champion (class 21)	Josh Geary 1st Class 21 YFC any breed Pen 67A - 41kg £195 PAK MECCA
Reserve Supreme Champion	P Batchelor 1st Class 17 Trimmed Lightweight Pen 55 - 41kg £200 PAK MECCA
Supreme Champion	P Batchelor 1st Class 15 Bel/Texel Sire Heavyweight Pen 45 - 53kg £240 PAK MECCA

Prize Winners - Cattle

Class	Exhibitor & Lot
Heaviest Steer Sponsored By A & B Tarry-Smith	DA Davies Lot 031 2nd in H/T Steer CHAR X 700kg - Woolley Bros 244ppk
Home, Bred, Fed and Halter led Sponsored by Page Bros	G R Fountaine & Son Lot 18 1st in Light Weight Heifer LIM 551kg Buyer - The Bell Hotel, Winslow 500ppk
Opposite Sex to Champion Sponsored by Rugby Farmers Mart	Bishop & Ketley Lot 001 1st in Medium Weight Steer 662kg - Woolley Bros 255ppk
Reserve Supreme Champion Sponsored by Mid England Agriculture Ltd	F Page Lot 20 2nd in Light Weight Heifer LIM X 556kg - Morris' Butchers 480ppk
Purchaser of Supreme Champion Sponsored by Howkins & Harrison	The Bell Hotel, Winslow
Supreme Champion Sponsored by Claddex	G R Fountaine & Son Lot 18 1st in Light Weight Heifer LIM 551kg Buyer - The Bell Hotel, Winslow 500ppk
Points Trophy	D W Gurney & Son
YFC Points Trophy	Josh Geary



RDB Pest Control

Reliable | Trustworthy | Fast | Effective
Competitive Prices

Ryan Brunt

07922 091 459

www.rdbpestcontrol.co.uk

Why You Should Choose Us

- ✓ Cater for Red Tractor and Farm Assurance Schemes
- ✓ Wide ranging experience on Farms with existing agricultural customers
- ✓ Member of Warwickshire Young Farmers
- ✓ Fully qualified - Level 2 RSPH in Pest Control
- ✓ Trustworthy and security vetted
- ✓ Prompt, reliable fast response

A selection of sites where I have experience:

Police Sites • Local Airport • Farms • Warehouses • Offices
• Industrial Estates • Food Premises • Private Houses
Country Estates • Building Sites • Local Councils • Schools •
Day Nurseries • Care Homes

The Bell Hotel

The Bell Pie Shop

Class winner and Gold award winners at the 2020 British Pie Awards! The Bell Pie Shop has a fantastic selection of homemade pies. Open all day everyday, located behind reception.

The Bell Carvery

Join us every Sunday 12pm-3pm and for our fantastic traditional carvery, takeaway or eat in.

Breakfast & Brunch

Monday to Friday 9am-midday

Saturday & Sunday 9am-midday

Bar food

Monday to Saturday 12am-9pm

(Food is not served between 3pm-6pm Mon-Thurs)

Afternoon Tea

Treat yourself to our delicious Afternoon Tea

Tuesday to Saturday 12pm-5pm

(Min. 2 people advance booking required)

The Bell Hotel, Market Square, Winslow , MK18 3AB

Tel: 01296 714091

www.thebell-hotel.co.uk info@thebellhotel.co.uk

We are operating social distancing measures in line with the Government Regulations to help keep you our customers and our staff safe.



Don't feel alone this Winter

The UK's Farming Help organisations are reminding people in the farming community not to suffer in silence this winter. If you are experiencing tough times, or you are concerned about a neighbour or friend...

Call us on

03000 111 999

(if in Scotland call 0300 111 4166)

You will speak initially to a member of our Helpline team who understands the pressures of farming & the rural community. They will listen in confidence and can then connect you directly with further support if you wish.

Telephone: 03000 111 999 Email: help@fcn.org.uk

Helpline operated by The Farming Community Network on behalf of Farming Help members.

The Farming Help Partnership is supported by The Prince's Countryside Fund.

HARRIS & CLARKE
CHARTERED ACCOUNTANTS

...Specialising In Agriculture...

**Our team of staff has many years of
experience in dealing with the accountancy
and taxation affairs of farmers, landowners
and agricultural contractors**

**For further information or a free no
obligation meeting please contact**

John Harris

7 Billing Road, Northampton, NN1 5AN
Telephone 01604 622274
www.harrisandclarke.co.uk



FOR SALE

25 Beltex x Cheviot Ewe Lambs.
Call 07774723758



S.J. Darker Contracting Ltd
Civil Engineering, Ground Works &
Fencing Contractors

25 Lower Street, Hillmorton
Rugby, Warwickshire CV21 4NP

Tel: 07944 295 789
Email: simondarker99@yahoo.com

**COUNSELLING FOR FARMERS
TALKING THERAPY FOR BETTER
WELLBEING**

EMAIL: tim@counsellingforfarmers.com

PHONE: 07546 077 686

**ALL ENQUIRIES IN STRICTEST
CONFIDENCE**

AVAILABLE

Self Contained ring fenced
Modern Dairy Youngstock (beef) unit
available excellent handling facilities.
Call 07931894953 (K259)

WE COVER SMALL FARMS, LARGE FARMS AND EVERYTHING IN BETWEEN



From sheep farmers to arable farmers.
Flower growers to poultry farmers.

NFU Mutual is proud to insure over 75% of UK farms with our Farm Select insurance. But we want more farms to benefit from great cover and local service. NFU Mutual has introduced Farm Essentials insurance - designed to meet the needs of smaller farms.

As your local agency, we are close by and can provide expert advice and hands-on support when you need it.

Call **Coventry Office** on **02476 444519**

NFU Mutual, 6 Eastwood Business Village,
Harry Weston Road, Binley Business Park,
Coventry, CV3 2UB



NFU Mutual
FARM INSURANCE

Farm insurance, the way it should be

We're a family-run business and pride ourselves on forging long term relationships with our farming and agricultural clients. Covering the Midlands, South West and South East, we deliver an extensive range of farm, agri business and equine policies tailored to you.

www.county-insurance.co.uk/farms

Farm & Equine **01865 844985**

General **01865 842084**

 Follow us @County_Farm



Independent Insurance Brokers County Insurance Services Limited. Address and Registered Office: County House, Glyme Court, Langford Lane, Kidlington, Oxon OX5 1LG. Authorised and regulated by the Financial Conduct Authority (FCA) (FRN: 597267). Company registered in England No. 08411634

FOR SALE PEDIGREE LIMOUSIN BULL

Goodrest Petroc 1.9.2019

Pedigree bull from easy calving lines.

Heterozygous polled. F49L F49L

By Greensons Howlett out of Ampertaine
Jamboree dam.

Calved easily from heifer.

Halter trained, tested clear of BVD, Leptospirosis,
IBR and TB.

High health heard, Johnes Level 2.

Fertility tested before sale, £2500

Call 07774723758



T.A.R HIRE

FOR HIRE:

10 & 14 TON REAR MUCK
SPREADERS

12 TON TRAILERS WITH
SILAGE SIDES

ROAD SWEEPER

FLAT TRAILERS

GRASS TOPPERS

CONTRACT MUCK

SPREADING SERVICES

CONTACT:

DAVENTRY (ROB) – 07801791212

HINCKLEY (ALAN) - 07802951179



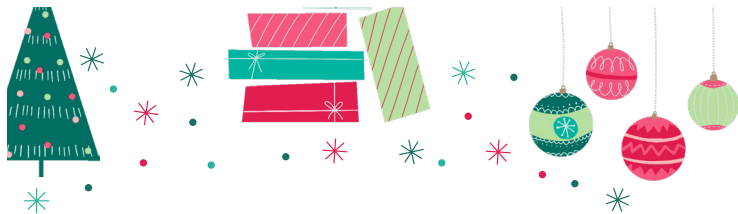
FINISHING CATTLE? GROWING CATTLE? FEEDING SHEEP?

**BERRYSTOCK
FEEDS**



Do you want HIGH PERFORMANCE, COST EFFECTIVE, FULLY ASSURED and COMPLETE FEEDS? Then contact BERRYSTOCK FEEDS:

Tel: 01788 890320 E-Mail: john@berryfieldsfarm.co.uk Web: www.berrystockfeeds.co.uk
BERRYFIELDS FARM, DAVENTRY, NN11 8NP



WARWICKSHIRE YOUNG FARMERS CHRISTMAS RAFFLE

WFYFC are hosting a luxury Christmas Raffle!

FOUR TICKETS FOR £10.00

Tickets are £2.50 each, Payment by Bank Transfer

Please contact us by Facebook or email
treasurer.wfyfc@gmail.com

Closing Date for Tickets is midnight Friday 11th
December 2020

Prizes include a weekend break, a distillery tour, fashion
items and much much more!

KEEP YOUR EYE ON THE WFYFC FACEBOOK PAGE FOR
THE BRILLIANT PRIZES WE HAVE ON OFFER!

CHEQUES CAN BE ACCEPTED MADE PAYABLE TO WFYFC
and posted to Mr Gordon Robson, Barratts Cottage, Marton, Nr Rugby, CV23 9RN.

RFM

THE MIDLANDS MART

—RUGBYFARMERSMART.COM—

FORTHCOMING SALES

**Monday 14th December
Sale of Store Cattle**

**Vendors who are wishing to sell stock
please feel free to contact:**

Tom Wrench - 07774 723758

Martin Lloyd - 07972 375351

John Eirian Davies- 07971202311

Gareth Doyle- 07902 330623

who will gladly make

A FREE ON FARM VISIT & VALUATION



Follow us on social media:

Facebook & Twitter - @RFMMidlandsMart

Instagram - rugbyfarmersmartltd